

CHESHIRE FAIR
“Celebrate the American Spirit”
AUGUST 4-8, 2010

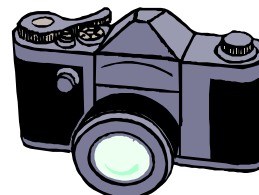
PHOTOGRAPHY DEPARTMENT

Superintendents

Arthur Boufford, N. Swanzey Tel. 352-4778, Judith Boufford, Keene

Premiums

	1st	2nd	3rd	4th
Class A	\$5	\$3	\$1	Ribbon
Class B	7	5	3	Ribbon
Class C	10	7	5	Ribbon
BEST IN SHOW	Ribbon			



Best photo depicting “Celebrate the American Spirit” theme \$10

Divisions

1. People 2. Animals 3. Scenic 4. Other

Sizes:

A Less than 8x10 mounted on cardboard or posterboard

B 8x10 or 8x12 mounted on cardboard or posterboard

C Larger than 8x12 mounted on 16x20 mountboard

RULES & REGULATIONS

1. Entries must be submitted between 4-7 PM, Monday, August 2 and must be picked up between 6-7 PM, Monday, August 9.
2. Each photographer is limited to eight (8) photos in one (1) size only.
3. Photos may be entered in any Division.
4. FRAMES, GLASS or FOAMBOARD will not be accepted.

EXHIBITION HALL RULES & REGULATIONS

1. The Exhibition Halls are open daily from 10 AM to 10 PM.
2. All exhibitors are entitled to purchase passes at a discount. Vouchers to purchase passes are obtainable from each department superintendent.
3. No item may be entered that has been exhibited in any previous year.
4. The exhibitor will furnish all containers. The Cheshire Fair Association will not be responsible for loss or damage of containers, so please do not use valuable containers.
5. The exhibitor must name all entries. Entry Form below or are available, along with Exhibit Tags, at the Fair Office.
6. All decisions by the judges will be final.
7. Entries are open to everyone in all departments, except when otherwise stated. (i.e. junior divisions)
8. The Cheshire Fair Association will not be responsible for any accident or damage that may occur to persons or property while on the fairgrounds or on the road leading to the fairgrounds.
9. Entries must remain for exhibit for the duration of the Fair. Any unauthorized removal of an exhibit will result in loss of premiums. See individual departments for times that exhibits may be picked up.
10. Prize money and ribbons not claimed by designated pickup time are forfeited. Items not picked up will be donated to a local charity.
11. Entries without competition will be judged on merit to the discretion of the judge in each department.
12. Exhibits that could be entered in more than one division will be placed at the discretion of the judge.
13. The Cheshire Fair Association reserves the right to prorate or defer premium payments, if necessary, should funds not be available to grant immediate payment.
14. Any knowing violation of these rules and the rules of each department will disqualify the exhibitor from premium awards.

